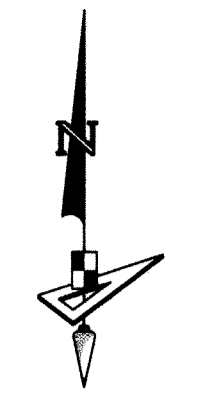
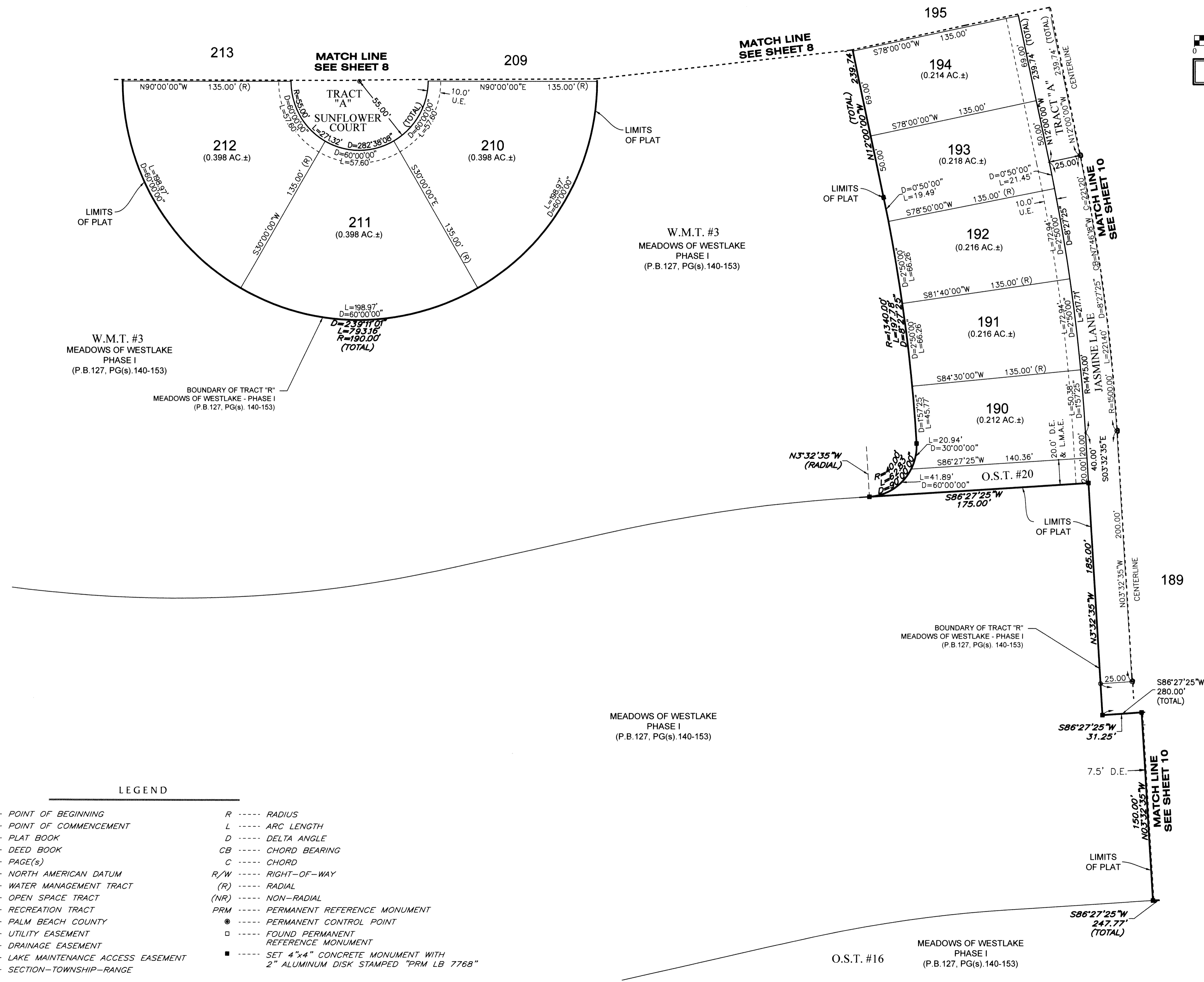
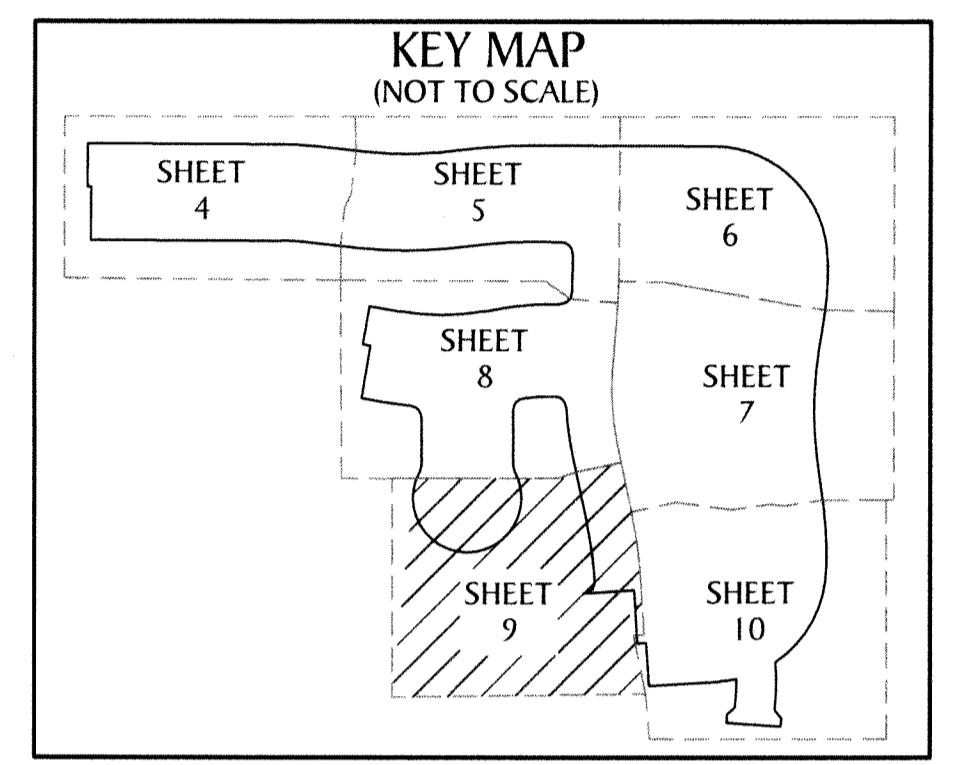


**MEADOWS OF WESTLAKE - PHASE II**  
 A SUBDIVISION IN SECTION 6, TOWNSHIP 43 SOUTH, RANGE 41 EAST,  
 CITY OF WESTLAKE, PALM BEACH COUNTY, FLORIDA, BEING A REPLAT  
 OF TRACT R AND OPEN SPACE TRACT #10 THROUGH OPEN SPACE TRACT #14 INCLUSIVE,  
 MEADOWS OF WESTLAKE - PHASE I, PLAT BOOK 127, PAGES 140 THROUGH 153,  
 PUBLIC RECORDS OF PALM BEACH COUNTY, FLORIDA



SCALE 1" = 40'  
 0 20 40 80  
 SEE NOTE ON SHEET 2  
 FOR BASIS OF BEARINGS

105



**LEGEND**

P.O.B. ----- POINT OF BEGINNING	R ----- RADIUS
P.O.C. ----- POINT OF COMMENCEMENT	L ----- ARC LENGTH
P.B. ----- PLAT BOOK	D ----- DELTA ANGLE
D.B. ----- DEED BOOK	CB ----- CHORD BEARING
PG./PG(s) ----- PAGE(S)	C ----- CHORD
NAD ----- NORTH AMERICAN DATUM	R/W ----- RIGHT-OF-WAY
W.M.T. ----- WATER MANAGEMENT TRACT	(R) ----- RADIAL
O.S.T. ----- OPEN SPACE TRACT	(NR) ----- NON-RADIAL
R.T. ----- RECREATION TRACT	PRM ----- PERMANENT REFERENCE MONUMENT
P.B.C. ----- PALM BEACH COUNTY	● ----- PERMANENT CONTROL POINT
U.E. ----- UTILITY EASEMENT	□ ----- FOUND PERMANENT REFERENCE MONUMENT
D.E. ----- DRAINAGE EASEMENT	■ ----- SET 4"x4" CONCRETE MONUMENT WITH 2" ALUMINUM DISK STAMPED "PRM LB 7768"
L.M.A.E. ----- LAKE MAINTENANCE ACCESS EASEMENT	
6-43-41 ----- SECTION-TOWNSHIP-RANGE	